

Del sig. Lerti



on disprezzarmi ingrato che

Musical notation on two staves: the upper staff is in treble clef with a key signature of one sharp (F#) and a common time signature (C); the lower staff is in bass clef with a common time signature (C). The lyrics are written between the staves.

poi ti spiacerà

Musical notation on two staves: the upper staff is in treble clef with a key signature of one sharp (F#) and a common time signature (C); the lower staff is in bass clef with a common time signature (C). The lyrics are written between the staves.

non disperzarmi in-

grati

che poi ti spiacerà

ti spiace

ra non disprezzarmi ingrato che poi ti spiace

Dia

64

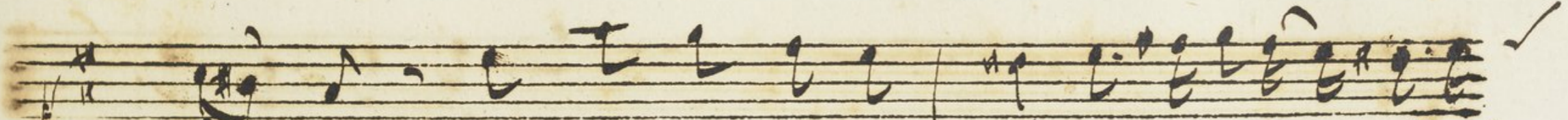
Detailed description: This system contains two staves. The upper staff is a vocal line in G major (one sharp) and 3/4 time. It begins with a half rest, followed by a quarter note G, a half note A, and a quarter note B. The second measure contains a half note G, a quarter note A, a quarter note B, a quarter note C, a quarter note D, a quarter note E, a quarter note F, and a quarter note G. The third measure contains a half note G, a quarter note A, a quarter note B, and a quarter note C. The lower staff is a basso continuo line in G major and 3/4 time. It begins with a half rest, followed by a quarter note G, a half note A, and a quarter note B. The second measure contains a half note G, a quarter note A, a quarter note B, a quarter note C, a quarter note D, a quarter note E, a quarter note F, and a quarter note G. The third measure contains a half note G, a quarter note A, a quarter note B, and a quarter note C. A '64' is written below the second measure of the basso line.

ra non disprezzarmi ingrato che poi ti spiace

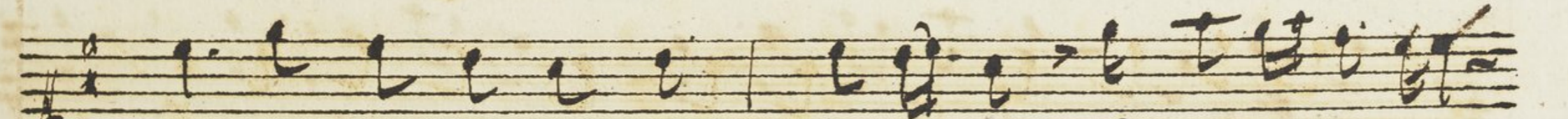
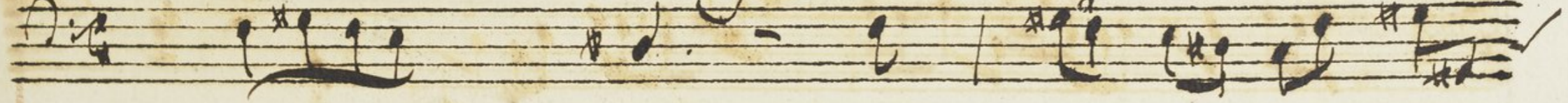
Detailed description: This system contains two staves. The upper staff is a vocal line in G major and 3/4 time. It begins with a half rest, followed by a quarter note G, a half note A, and a quarter note B. The second measure contains a half note G, a quarter note A, a quarter note B, a quarter note C, a quarter note D, a quarter note E, a quarter note F, and a quarter note G. The third measure contains a half note G, a quarter note A, a quarter note B, and a quarter note C. The lower staff is a basso continuo line in G major and 3/4 time. It begins with a half rest, followed by a quarter note G, a half note A, and a quarter note B. The second measure contains a half note G, a quarter note A, a quarter note B, a quarter note C, a quarter note D, a quarter note E, a quarter note F, and a quarter note G. The third measure contains a half note G, a quarter note A, a quarter note B, and a quarter note C.

Handwritten musical notation for the first system. The top staff is a vocal line in G major (one sharp) and 3/4 time, with lyrics "ra" and "se ad". The bottom staff is a lute line in G major and 3/4 time, featuring a complex rhythmic pattern with many sixteenth notes.

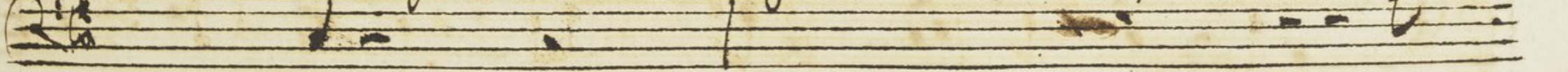
Handwritten musical notation for the second system. The top staff is a vocal line in G major and 3/4 time, with lyrics "altrium di mi done non dir che in fida fo". The bottom staff is a lute line in G major and 3/4 time, featuring a simpler rhythmic pattern with quarter and eighth notes.



sono non incolpar il Fato ma la tua crudel-



ta non disprezzarmi ingrato che poi ti spiace



Handwritten musical score on aged paper, featuring two systems of music. Each system consists of a vocal line (top staff) and a piano accompaniment line (bottom staff).

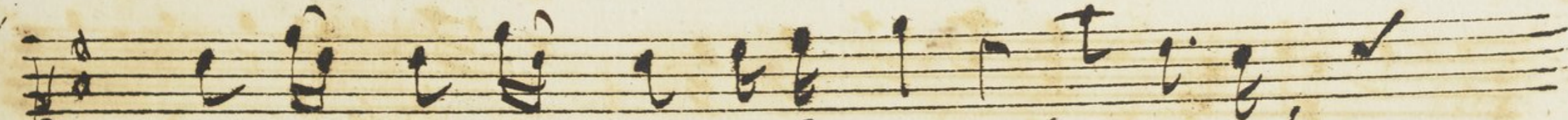
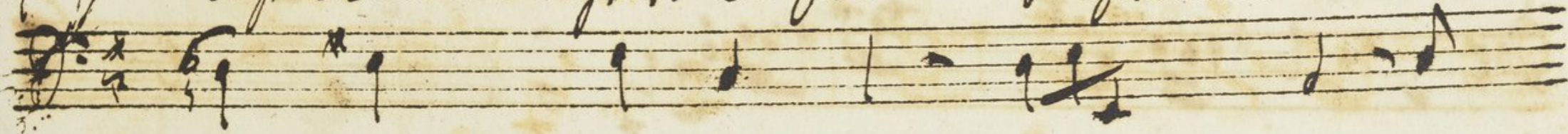
The first system includes the lyrics: *non disprezzarmi in-*

The second system includes the lyrics: *-grato che mi ti spiacerà ti spiacerà non*

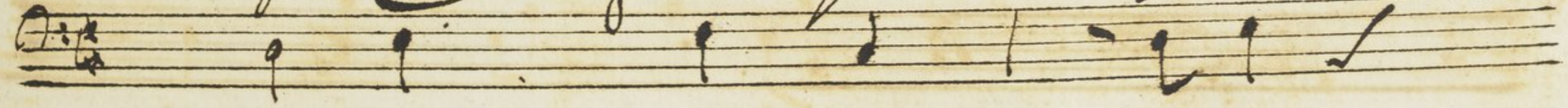
The notation includes various note values, rests, and bar lines. The piano part features complex chordal textures with many beamed notes. The paper shows signs of age, including foxing and staining.



disprezzarmi ingrato che poi ti spiacerà non



disprezzarmi ingrato che poi ti spiace =



A handwritten musical score on aged, yellowed paper. The score consists of two staves. The upper staff contains a melodic line with several notes and rests, ending with a double bar line. The lower staff contains a more complex melodic line with many notes, including some beamed eighth notes, and also ends with a double bar line. The word "ra" is written in cursive below the first few notes of the lower staff. The word "Fine" is written in a large, elegant cursive script at the end of the lower staff. Below the two staves, there are three more empty staves. The paper shows signs of age, including foxing and staining.

ra

Fine