

del sig. L'erti



el mio pecc



*Handwritten musical score on aged paper, featuring two systems of staves with lyrics in Italian.*

*System 1:*

*Top staff:* Musical notation with lyrics: *nell mio petto inquieta sog-*

*Bottom staff:* Musical notation with lyrics: *-giorna nell mio petto inquieta sog-*

*System 2:*

*Top staff:* Musical notation with lyrics: *nell mio petto inquieta sog-*

*Bottom staff:* Musical notation with lyrics: *-giorna nell mio petto inquieta sog-*

*Additional notes: The paper shows signs of age, including foxing and water damage. There is a faint, illegible stamp or signature at the top center of the page.*









nel mio petto inquieta *logz*



giorna tormentata in del gelosia





Handwritten musical score for the first system. The top staff is a vocal line with a treble clef and a key signature of one flat (B-flat). The lyrics are written below the notes: "Armen ista? undel Gelo- ista". The bottom staff is a bass line with a bass clef and a key signature of one flat. The music consists of several measures with various note values and rests.

Handwritten musical score for the second system. The top staff is a vocal line with a treble clef and a key signature of one flat. The bottom staff is a bass line with a bass clef and a key signature of one flat. The music consists of several measures with various note values and rests. A fermata is present over the first measure of the bass line.



A handwritten musical score on aged, yellowed paper. The score consists of four staves. The top two staves are for a vocal line, and the bottom two are for a piano accompaniment. The lyrics are written in a cursive hand below the vocal line. The paper shows signs of age, including foxing and some staining.

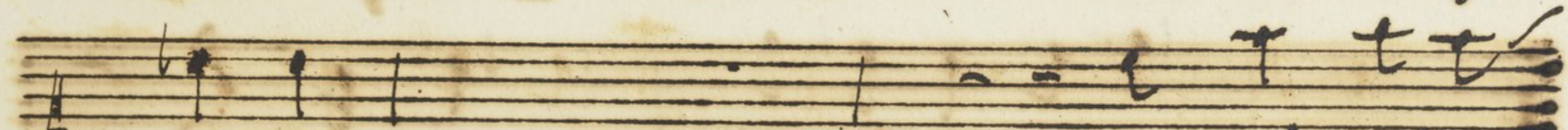
*partte e*

*riede* *partte e* *riede ma*





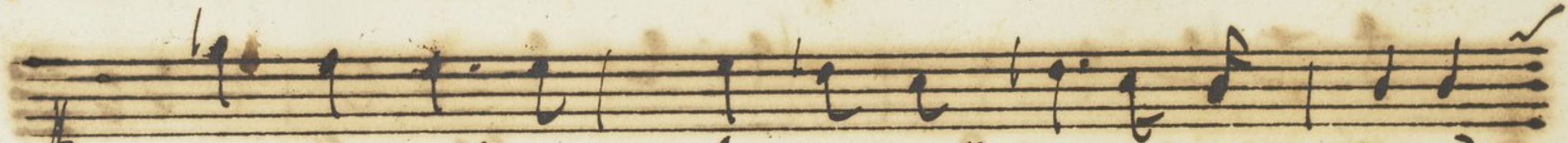
sempre risorta piu mortale nell'anima



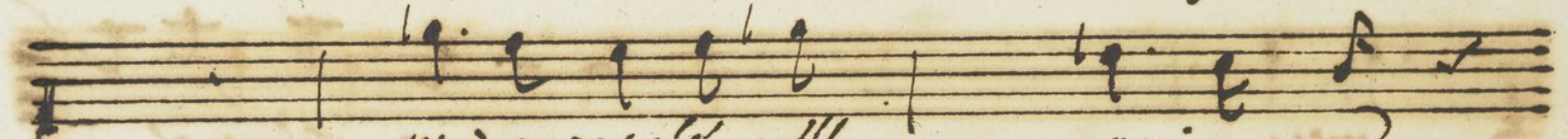
ma ma sempre ri-







- torna piu' mortale nell' anima mia



piu' mortale nell' anima



mia



Handwritten musical notation for the first system. The top staff is a vocal line with a treble clef and a common time signature. It contains a few notes and rests. The bottom staff is a piano accompaniment line with a bass clef and a common time signature. It features a melodic line with several measures of eighth and sixteenth notes. The word "mia" is written in cursive above the piano staff.

Handwritten musical notation for the second system. The top staff is a vocal line with a treble clef and a common time signature. It contains a few notes and rests. The bottom staff is a piano accompaniment line with a bass clef and a common time signature. It features a melodic line with several measures of eighth and sixteenth notes. The words "nel mio" are written in cursive above the piano staff.





seno in quietta soggiorno nel mio



seno in quietta soggiorno tormentosa, e





del Gelosia stormén sua crudel Gelosia  
 nel mio Petto in quietta soggiorna



Handwritten musical notation for the first system. The top staff is a vocal line with a treble clef and a key signature of one flat. The bottom staff is a basso continuo line with a bass clef and a common time signature. The lyrics are written between the staves.

strumenta crudel gloria Armen-

Handwritten musical notation for the second system. The top staff is a vocal line with a treble clef and a key signature of one flat. The bottom staff is a basso continuo line with a bass clef and a common time signature. The lyrics are written between the staves.

...ta crudel gloria Fine