

And. molto

Del S. S. Am. Vivaldi

Violini

Handwritten musical notation for the first system, consisting of two staves. The notation includes various note values, rests, and slurs, indicating a complex rhythmic structure.

An empty musical staff with a treble clef and a 2/4 time signature, serving as a placeholder for a second system.

Handwritten musical notation for the second system, consisting of a single staff with rhythmic patterns and slurs.

Senza Tamburi

Handwritten musical notation for the third system, consisting of two staves with complex rhythmic patterns and slurs.

An empty musical staff with a treble clef and a 2/4 time signature, serving as a placeholder for a fourth system.

Handwritten musical notation for the fourth system, consisting of a single staff with rhythmic patterns and slurs.



Cont'la parte *Cont'la parte*

mio amor mio la cruda cruda sorte mi ti rende p'mia morte e non già p' tua pietà

p'mia morte e non già p' tua pietà

Handwritten musical score for the first system. It consists of four staves. The top staff is the vocal line, starting with a treble clef and a key signature of one flat. The second and fourth staves are for piano accompaniment, with the second staff in treble clef and the fourth in bass clef. The third staff contains the lyrics: *ta e non già sua pietà*. The music is written in a cursive hand with various note values and rests.

Handwritten musical score for the second system, consisting of four staves. The top staff is the vocal line, starting with a treble clef and a key signature of one flat. The second and fourth staves are for piano accompaniment, with the second staff in treble clef and the fourth in bass clef. The third staff contains the lyrics: *Amor mio amor mio La cruda cruda dove mi ti vende e mio*. The music is written in a cursive hand with various note values and rests. There are some markings above the vocal line, including *ro* and *rit.*.

Handwritten musical score for the first system. It consists of three staves. The top staff is a vocal line in G major, starting with a treble clef and a common time signature. The middle staff is a piano accompaniment in G major, starting with a grand staff clef. The lyrics are written in cursive below the piano staff.

morte la cruda cruda sorte mi ti rende & mia morte & mia mor

Handwritten musical score for the second system. It consists of three staves. The top staff is a vocal line in G major, continuing from the first system. The middle staff is a piano accompaniment in G major, continuing from the first system. The lyrics are written in cursive below the piano staff.

te e non già & sua pietà mi ti rende & mia

Handwritten musical score for the first system, consisting of four staves. The top two staves are for a vocal line, and the bottom two are for a piano accompaniment. The lyrics are written below the third staff.

Se *Or*
Se *Or*
Se *Or*
Or

more, e non già *Or* mia pietà *Or* mia pietà

Handwritten musical score for the second system, consisting of four staves. The top two staves are for a vocal line, and the bottom two are for a piano accompaniment.

Se *Or*
Se *Or*
Se *Or*
Or

Handwritten musical score for the third system, consisting of four staves. The top two staves are for a vocal line, and the bottom two are for a piano accompaniment.

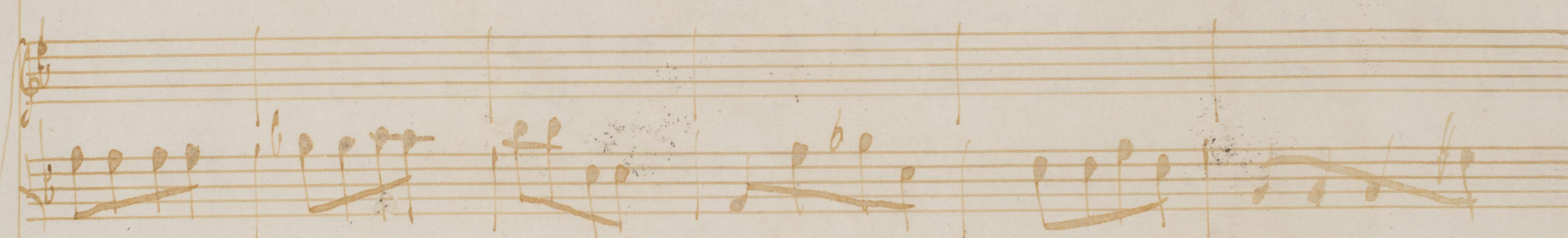
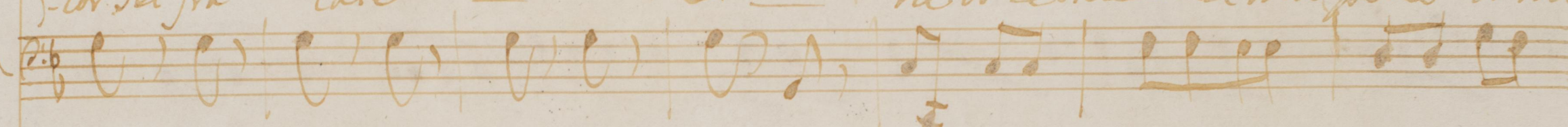
Se *Or*
Se *Or*
Se *Or*
Or

Se tu an:

Con la palle



Cor. Sei fra late ne or le tue un le mie pene il mio



Cor pianger dourà il mio Cor pianger dourà or le tue cor le mie



Handwritten musical score for three staves. The top staff is a treble clef with a key signature of two flats. The middle staff is a vocal line with lyrics in French. The bottom staff is a bass clef. The lyrics are: "pene il mio cor pianger dovra il mio cor pianger do".

D.C.

Fine

