

Cantata à Voce Solo del Sig^o Aless^o Scarlatti



Quando Credea il Coro

doggo Lungo Ser uir d'avo penare)

i sospira di, e Cari dell' Fool mio cru-

del goder gli affetti Con rigidi dispetti

Con spiefatti rigori spera spera mi

disse, o pena o pena, o mori.

Ario *adag.*

Vuol ch'io spero, / e

vuol ch'io mora la tiranna La ti ranna mio bel

SANTACECILIA.IT

tà vuol ch'io spero, e vuol ch'io mora La si

ranna vuol, che mora La si ranna mio bel

ta *La tiranna mia bella*

Collo *Stral di cruda*

morte col vi *gor di du ra s'ene mi Con*

danna *adoppie gene La sua fiera crudel*

ta mi condanna a doppie pene la sua

fiera la sua fiera crudel ta

la sua fiera fiera crudelta

SANTACECILIA.IT

uol, ch'io Speri e uol ch'io

Mora La ti ranna La tiranna mio bel-

tà uol ch'io Speri e uol che mora La ti

ranna uol che! mora La tiranna mio bel-

SANTACECILIA.IT

Handwritten musical score for the first system. The vocal line (treble clef) contains the lyrics: "tà", "La ti", "ranno mia bel tà". The piano accompaniment (bass clef) consists of eighth and sixteenth notes.

Handwritten musical score for the second system. The vocal line is mostly blank with a few notes. The piano accompaniment (bass clef) includes a fermata and a measure with a sharp sign above it.

SANT'AGATA

Handwritten musical score for the third system, starting with "Rec.º". The vocal line (treble clef) contains the lyrics: "s'è pur uer ch'in A move Lusin'". The piano accompaniment (bass clef) features a long note with a fermata.

Handwritten musical score for the fourth system. The vocal line (treble clef) contains the lyrics: "ghiera Speranza è ueleno mortal d'amante". The piano accompaniment (bass clef) includes a fermata and a 3/3 time signature.

Core: *f* che *f* che crüda spietata uoi ch'io

Speri che moras se la speme tal

or e mor - - te ancora

Aria *and.*

Bastana

Handwritten musical score for the first system. The upper staff is a vocal line with lyrics: "Basta uà dir mi Sperar". The lower staff is a piano accompaniment. A tempo marking "Allegretto" (Allegretto) is written above the first measure of the piano part. The page number "67" is written in the right margin.

Handwritten musical score for the second system. The upper staff continues the vocal line with lyrics: "per far mi poi morir basta". The lower staff continues the piano accompaniment. A tempo marking "Allegretto" (Allegretto) is written above the second measure of the piano part.

SANTACECILIA.IT

Handwritten musical score for the third system. The upper staff continues the vocal line with lyrics: "uà dir mi Sperar per far mi poi". The lower staff continues the piano accompaniment. A tempo marking "Allegretto" (Allegretto) is written above the second measure of the piano part.

Handwritten musical score for the fourth system. The upper staff continues the vocal line with lyrics: "morir per farmi poi morir". The lower staff continues the piano accompaniment. A tempo marking "Allegretto" (Allegretto) is written above the second measure of the piano part.

far mi poi morir basta uà dirmi

Sperò far mi poi morir far mi

SANTACECILIA.IT

poi mo rir

tormento d'un seno d'un'Alma iue'

68

Leno La spene del bene, ch'è tardi al gio'

iv, tor mento d'un leno d'un'

SANTACECILIA.IT

alma è ueleno La spene del'

bene ch'è tardi al gioir ch'è tar'

X

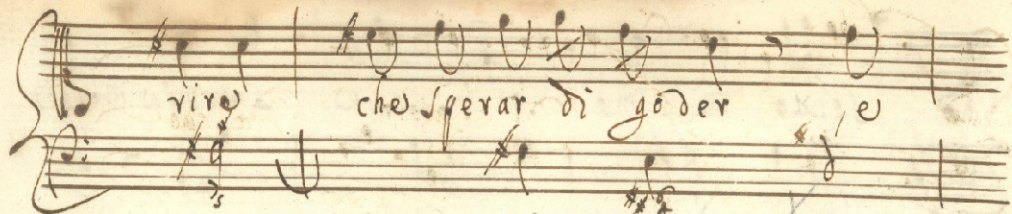
di al gioir Palajo

Or se Lunga speranza

Con più Lungo mar fir un' alma uccide

mori mori Cor mio che fia meglio me -

vivo) che sperar di goder e



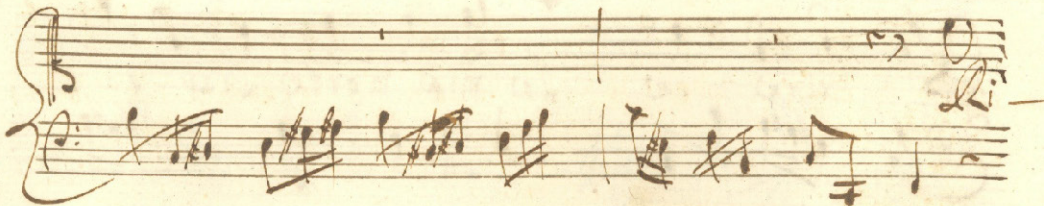
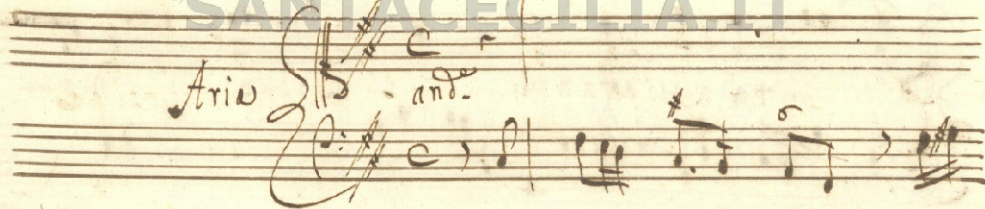
poi movi — — — — — ro



69

SANTACECILIA.IT

Arioso and.



soluo di morire e la mia morte

sia pace del Alma mia me

ta agli affanni vi soluo di mo-

rivo e la mia morte sia pa-

ce del Alma mia pa ce del Alma

mia meta agl' affan ni pa

ce del Alma mia meta agl' affan

ni se ua ga di mie

SANTACECLIA.IT

pene m'allet ti con la spene tro

uo ne uezzi tuoi lusin

ghe e ingan

ni trouo ne uezzi tuoi lusin

ghe

A#3 A#3

ghe einganni ne pezzi lu sin

ghe è ingan ni

A#3 A#3

SANTACECILIA.IT

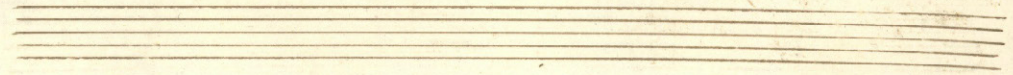
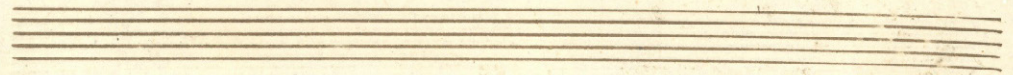
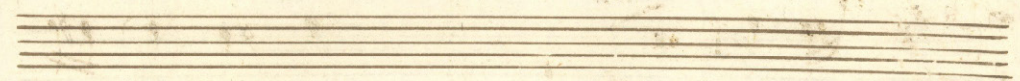
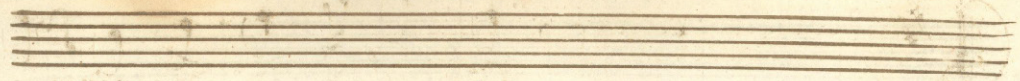
Handwritten musical notation for the first system. It consists of a treble staff and a bass staff. The treble staff contains a melodic line with notes and rests. The bass staff contains a bass line with notes and rests. The lyrics "li soluo di morire e" are written below the treble staff. There is a small "A3" marking above the first measure of the bass staff.

Handwritten musical notation for the second system. It consists of a treble staff and a bass staff. The treble staff contains a melodic line with notes and rests. The bass staff contains a bass line with notes and rests. The lyrics "La mia morte" are written below the treble staff, and "Da capo" is written below the bass staff. There is a small "A3" marking above the first measure of the bass staff.

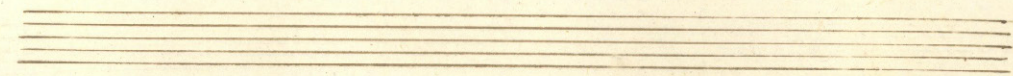
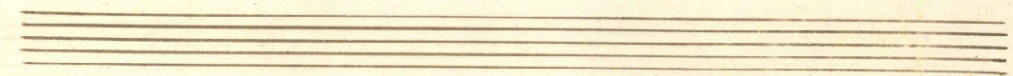
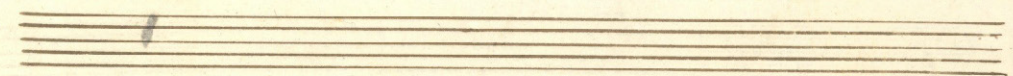
SANTACECILIA.IT *fine*

Four empty musical staves at the bottom of the page, consisting of four sets of five-line staves.

52



SANTACECILIA.IT





SANTACECILIA.IT