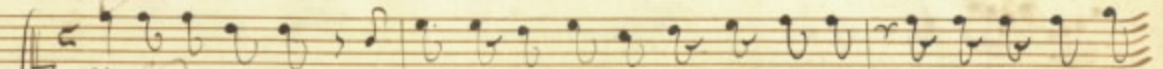
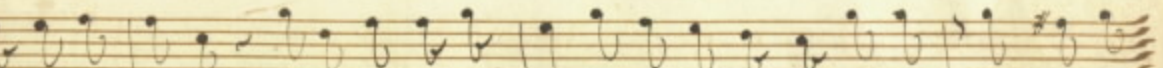
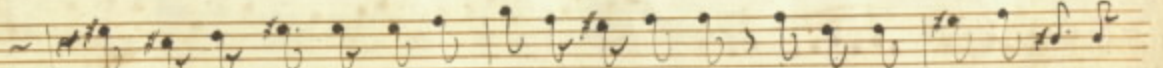


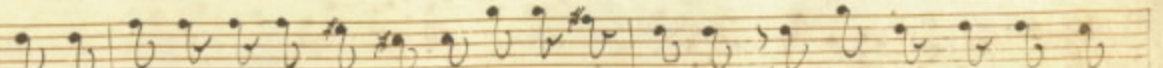
Cantata Per Voce sola di Soprano

Del Sig. Gio: Alessandro Scarlatti

Rec.^{uo} 
 O' ch'è adun tronco alear mia voffa, etra appesa per non più sta


 mio qualgà vofea? or di' Coria! or io vonda al suono concorde. E' unior

Trio 
 quindi il cantar d'un semplicito uocello Ch'intorno a questo limpi-

Rec. 
 vucello si odia anon accena - tempales ordes in tanto que voffe

Andante dolce e ravello voce lo can =

Andante moderato

mor = mo = vi = dolce in vita il canto mio Ga = ro lim =

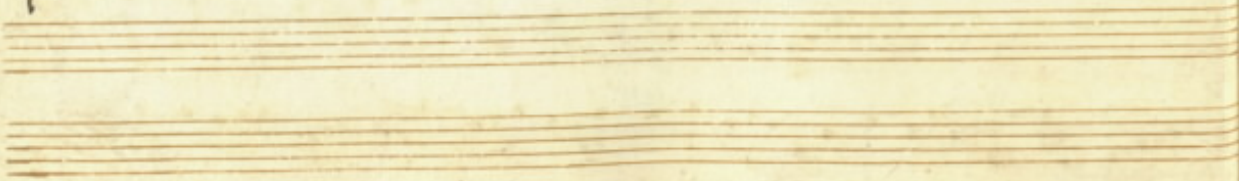
do *suave*

Cloni ti farai piu chiaro e bello chiaro chiaro, e bello *Storri*

pur fra l'erbo ci fiori che yando auanti a cloni ti farai piu chiaro, e

bello chiaro chiaro e bello auantia cloni ti farai piu chiaro e bello chiaro

chiaro bello bello *Da capo =*



scendono pure à br. dal uicin monte. le rinde più leggiadre e più ve

zoge à coronar la fronte di rube eretto e roge chaneluochiari

L'ingiditi w. mori spargendotai di ser sembianze belle n'aurazo luce in

Del tutto tutte le belle

And. D'angel = li a lo vain or = no or sul fino ed

or sul or = no Dolcemente. Cante = va

Dolcemente. Cante = va

va

And. D'angel = li a lo = vain or =

no or sul fino ed or sul or = no Dolcemente. Cante

Musical notation on two staves. The first staff contains a melodic line with eighth and sixteenth notes. The second staff contains a bass line with quarter and eighth notes.

Musical notation on two staves. The first staff contains a melodic line with notes and rests. The second staff contains a bass line with notes and rests. Performance markings include *Dolce*, *meno*, and *meno*.

Musical notation on two staves. The first staff contains a melodic line with notes and rests. The second staff contains a bass line with notes and rests. Performance markings include *Dolce* and *meno*.

Musical notation on two staves. The first staff contains a melodic line with notes and rests. The second staff contains a bass line with notes and rests. Performance markings include *te - rà* and *Cante - rà*.

Musical notation on two staves. The first staff contains a melodic line with notes and rests. The second staff contains a bass line with notes and rests. Performance markings include *gi no cantem sul orno cante*.

ra ed al gra - to mor mo - ra - ver

di queſt on - de dolci e chiare le - co

l'eco ancor riſponderà, riſponderà, riſponderà al gra - to

mor mo - ra - ver di queſt on - de dolci e chiare. l'eco ancor

riſponderà. l'eco ancor riſpond - de ra

Handwritten musical notation on a single staff, including notes, rests, and a large number '99' at the end.

Handwritten musical notation on a single staff, including notes, rests, and the word 'rispondera' written three times.

Handwritten musical notation on a single staff, including notes, rests, and the word 'rispondera' written once.

Handwritten musical notation on a single staff, including notes, rests, and the word 'Da Capo' written in a decorative script.

Five empty musical staves on the page.

197

