

Andante



p
f



ff *tr. Brill.* *al. l'ordine delle finis im. zuzifianu.*



Andante
f
ma.



Handwritten musical notation on three staves. The notation includes various note values, rests, and slurs. The first staff begins with a treble clef and a common time signature. The second and third staves also begin with treble clefs. The notation is dense and appears to be a single melodic line or a simple harmonic setting.

A series of ten empty musical staves, each consisting of five horizontal lines, arranged vertically in the middle of the page. These staves are currently blank, with only vertical bar lines visible.

Handwritten musical notation on two staves. The top staff contains a melodic line with lyrics written below it. The bottom staff contains a bass line. The lyrics are in German and appear to be a religious or liturgical text.

Wie Thron ist nicht dein zuebraden, wil sol = du flöte gold flöte duoy - dein Spielum selst wile zision Amade

Handwritten musical notation on four staves. The notation includes various rhythmic values, accidentals (sharps and naturals), and slurs. The first staff begins with a treble clef and a key signature of one sharp (F#). The music is written in a cursive, historical style.

Handwritten musical notation on a single staff, starting with a 2/4 time signature and a treble clef. The notation consists of several measures with vertical stems and some horizontal lines, possibly representing a specific rhythmic exercise or a fragment of a piece.

Handwritten musical notation on two staves with German lyrics underneath. The lyrics are written in a cursive hand.

Spinn!
 folgen.
 Ein Hund ist doch kein Zauberton!
Spinn!
 recht die Spinnweb
 will solch Flöte durch sein Spinnweb
 fohren



Handwritten musical notation on three staves. The first staff contains the notes *cnc. mf.* and *fin*. The second staff contains *cnc. mf.* and *p.*. The third staff contains *cnc. mf.* and *p.*. The notation includes various rhythmic values and slurs.

Handwritten musical notation on a single staff, labeled *2.obe*. It features a treble clef and several notes with stems.

Handwritten musical notation on two staves. The top staff contains the lyrics: *flöte duoy dein Ogin-clau flöte bildt Giam forinr - vol mir fremim mir fremim blüht dabon, mir fremim blüht da*. The bottom staff contains musical notation with dynamic markings *mf.* and *pl.*.

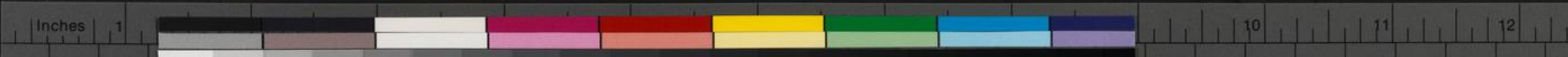
2 fagott.

(Corno)

francesca!

francesca! francesca! francesca!

im=



Handwritten musical score on aged paper, featuring ten staves. The notation includes various notes, rests, and dynamic markings such as "cresc. for" and "Dyitlt.". The bottom staff contains lyrics in German: "...! 200? 202 203: u/ 60, 20 kindig di! ..." and "Ja, Jesu ist begraben von!". A large diagonal line is drawn across the right side of the page.

52 Presto

~~Andante~~

Andante

Andante

52

Presto

Andante

19.

88

Violle - *Andante* *Violle* *Andante*

~~Andante~~

Kindheit das so hemmten pfon! - Kindheit alt so mit ihm zu mir! - Kind

Presto

Andante

Andante *Presto*
Handwritten musical notation on a grand staff. The upper staff contains a melodic line with various note values and rests. The lower staff contains a bass line with similar notation. Dynamics include *fortissimo*, *Andante*, and *Presto*. There are also handwritten markings like *Li* and *cresc. for.*

Andante *Presto*
Handwritten musical notation on a grand staff. The upper staff contains a melodic line with various note values and rests. The lower staff contains a bass line with similar notation. Dynamics include *Andante* and *Presto*. There are also handwritten markings like *Li* and *cresc. for.*

Andante *Presto*
Handwritten musical notation on a grand staff. The upper staff contains a melodic line with various note values and rests. The lower staff contains a bass line with similar notation. Dynamics include *Andante* and *Presto*. There are also handwritten markings like *Li* and *cresc. for.*

Andante *Presto*
= lauff - die nicht - führt mich das ton zu ija! führt mich das ton zu ija! führt mich - führt mich das ton - zu -