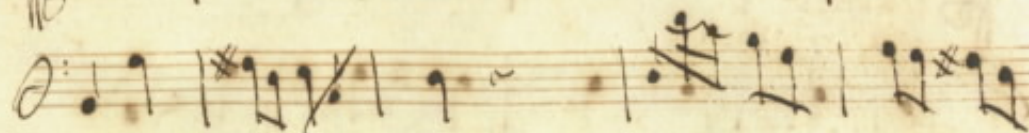
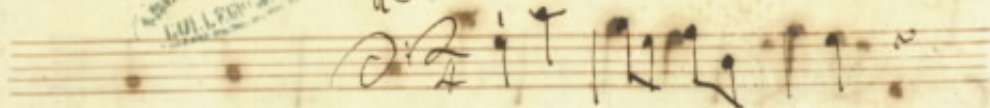
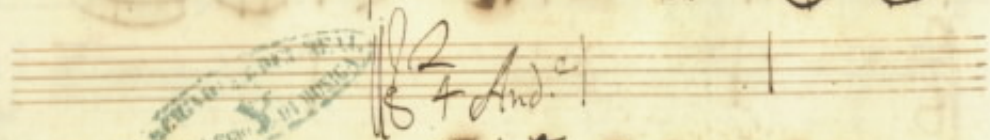
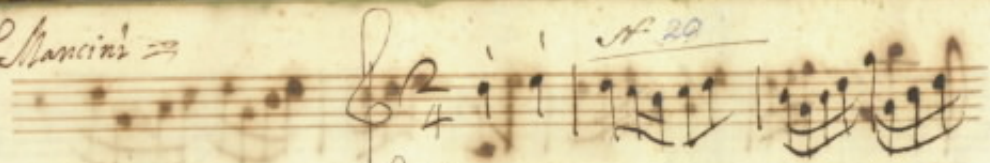


Del S. Mancini 23

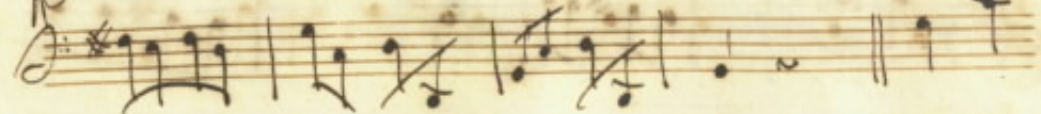
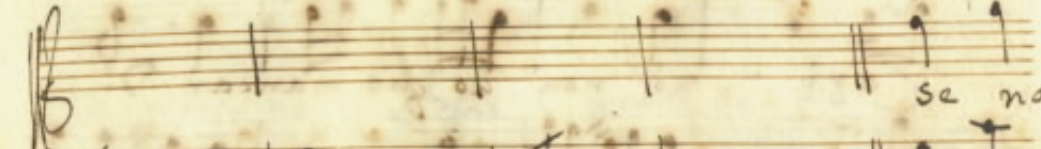
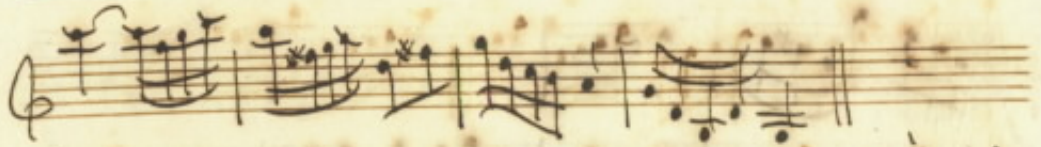
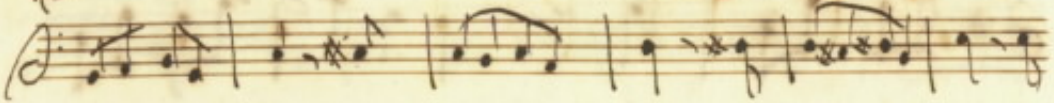
N. 20

165



Handwritten musical notation on two staves. The top staff is a treble clef with a key signature of one sharp (F#) and a common time signature (C). It contains a melodic line with various note values, including eighth and sixteenth notes, and rests. The bottom staff is a bass clef with a common time signature (C) and contains a bass line with similar note values and rests. The paper shows signs of age and staining.

Handwritten musical notation on two staves, continuing the piece. The top staff is a treble clef with a key signature of one sharp (F#) and a common time signature (C). It contains a melodic line with various note values, including eighth and sixteenth notes, and rests. The bottom staff is a bass clef with a common time signature (C) and contains a bass line with similar note values and rests. The paper shows signs of age and staining.



se na=



Discessero Mille Amori
e in me fusero mille

This system contains three staves of handwritten musical notation. The top staff is a treble clef with a key signature of one flat and a common time signature. The middle staff is a vocal line with lyrics written below it. The bottom staff is a bass clef. The music consists of several measures with various note values and rests.

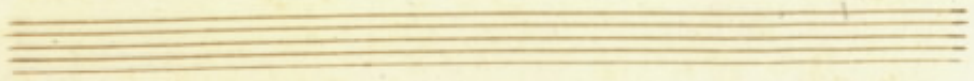
Cori ni non uo gno mancar di

This system contains three staves of handwritten musical notation, continuing from the first system. The top staff is a treble clef with a key signature of one flat and a common time signature. The middle staff is a vocal line with lyrics written below it. The bottom staff is a bass clef. The music continues with various note values and rests.

And.

Handwritten musical score for the first system. It consists of three staves: a vocal line in treble clef and two piano accompaniment staves in bass clef. The music is in a key with one sharp (F#) and a common time signature. The lyrics are written below the vocal line.

*F*è nò uoglio mancar = = = nò



Handwritten musical score for the second system. It consists of three staves: a vocal line in treble clef and two piano accompaniment staves in bass clef. The music continues from the first system. The lyrics are written below the vocal line.

Nò non uoglio mancar di *F*è



Handwritten musical score for the first system. The top staff is in treble clef and contains a melodic line with various notes, including some with accidentals (sharps and naturals). The bottom staff is in bass clef and contains a bass line with notes and rests. There are two empty staves below the first system.

Handwritten musical score for the second system. The top staff is in treble clef and contains a melodic line with notes and rests. The middle staff is in bass clef and contains a bass line with notes and rests. The lyrics "Se nascessero mille Amori e in me" are written across the middle staff. There are two empty staves below the second system.

Handwritten musical score for the first system. It consists of three staves: a vocal line in G major (one sharp) and two piano accompaniment staves. The vocal line has the lyrics: "Fossero mille Cori no non uoglio no no non uoglio man=".

Handwritten musical score for the second system. It consists of three staves: a vocal line in G major (one sharp) and two piano accompaniment staves. The vocal line has the lyrics: "no uo = glio no". The piano accompaniment includes the marking "dolc" (dolce) at the beginning and "car" (crescendo) in the middle.

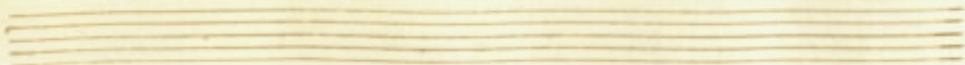
Handwritten musical score for the first system. It consists of three staves. The top staff is a vocal line in treble clef. The middle staff is a piano accompaniment in bass clef, with the lyrics "no no non uoglio mancar di fe no uoglio no" written below it. The bottom staff is a bass line in bass clef. The music is written in a historical style with various note values and clefs.

Handwritten musical score for the second system. It consists of three staves. The top staff is a vocal line in treble clef. The middle staff is a piano accompaniment in bass clef, with the lyrics "no no non uoglio mancar di fe" written below it. The bottom staff is a bass line in bass clef. The music is written in a historical style with various note values and clefs.

Handwritten musical score for the first system, featuring treble, alto, and bass staves with various musical notations including notes, rests, and accidentals.



Handwritten musical score for the second system, including lyrics "Se tornassevo mille Veneri sarò" written below the notes.



Handwritten musical score for the first system. It consists of three staves: a treble clef staff at the top, a vocal staff in the middle, and a bass clef staff at the bottom. The music is written in a key with one sharp (F#) and a common time signature (C). The lyrics under the vocal staff are "Sempre sino alle cenere bella". The notation includes various note values, rests, and accidentals (sharps and naturals).

Handwritten musical score for the second system. It consists of three staves: a treble clef staff at the top, a vocal staff in the middle, and a bass clef staff at the bottom. The music continues in the same key and time signature as the first system. The lyrics under the vocal staff are "Gloria Goete a te se tornassero mille". The notation includes various note values, rests, and accidentals (sharps and naturals).

Veneri sarò sempre sino alle



Veneri bella Clo- ri fedele à te bella



Handwritten musical score for the first system. The top staff is a vocal line in G major, starting with a treble clef and a key signature of one sharp (F#). The bottom staff is a piano accompaniment in G major, starting with a bass clef and a key signature of one sharp (F#). The lyrics are written below the vocal line: "clo ri Cori ock La bella Con fe =".

Handwritten musical score for the second system. The top staff is a vocal line in G major, starting with a treble clef and a key signature of one sharp (F#). The bottom staff is a piano accompaniment in G major, starting with a bass clef and a key signature of one sharp (F#). The lyrics are written below the vocal line: "De la à ta".

Da Capo

Cosi cantava in bella notte estiva a=

Spiè dell'Auentino in Lido Curillo

dall' opposta riva Adonna leggiadra aprì la uocca al'

canto e faucello così

Aria
Con V.V.

12/8

Handwritten musical notation for the first system, consisting of three staves. The top two staves are in treble clef with a 6/8 time signature, and the bottom staff is in bass clef. The notation includes various note values, rests, and bar lines.

Handwritten musical notation for the second system, consisting of two staves in treble clef with a 6/8 time signature. The notation includes various note values, rests, and bar lines.

Handwritten musical notation for the third system, consisting of two staves. The top staff is in treble clef and contains the lyrics "Bella bella la fedeltà bella la fedeltà". The bottom staff is in bass clef. The notation includes various note values, rests, and bar lines.

Etia ma bella come il mar che per farlo cangiar barba u' moment.

The image shows a page of handwritten musical notation on aged, stained paper. The score consists of eight staves. The first two staves are vocal lines in a soprano and alto clef, respectively. The third staff is the vocal line with the lyrics written below it. The fourth staff is a bass line in a bass clef. The fifth and sixth staves are piano accompaniment in treble clef, featuring complex chordal textures with many accidentals. The seventh staff is a piano accompaniment in bass clef. The eighth staff is a final bass line. The handwriting is in an old style, and the paper shows significant water damage and foxing.

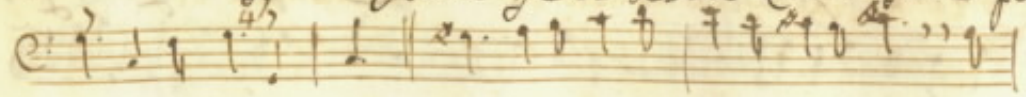
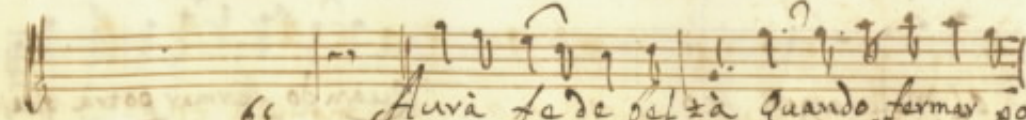
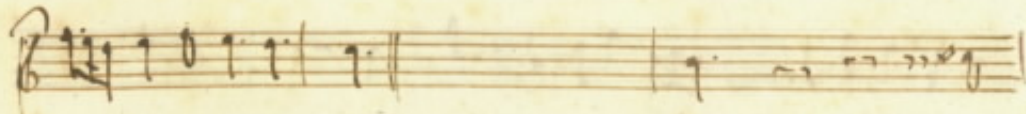
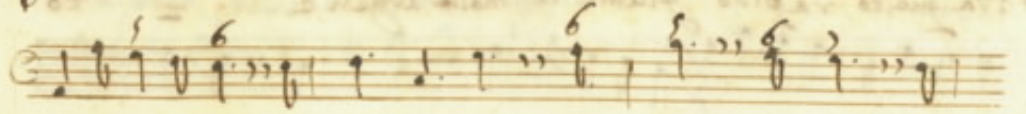
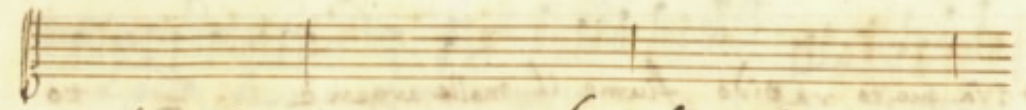
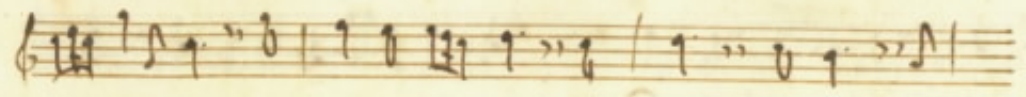
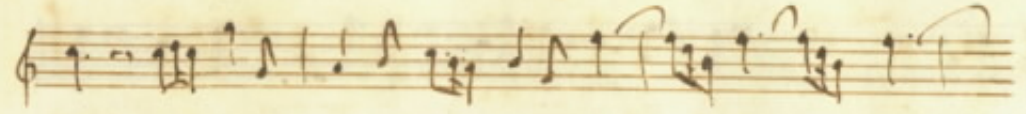
bella è la fedeltà mià bella come il mar che per farla can=

giar ba. A un momen to che per farlo can=

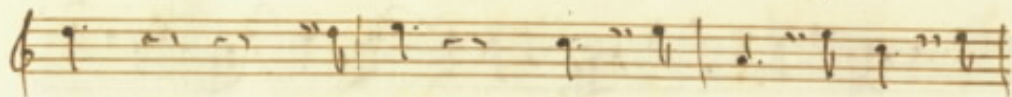
Handwritten musical score on aged paper, featuring six systems of staves. The notation includes treble and bass clefs, various note values, rests, and bar lines. The lyrics are written in a cursive script below the staves.

giar = = = ba = = = staun men 65

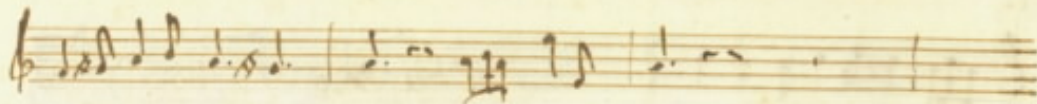
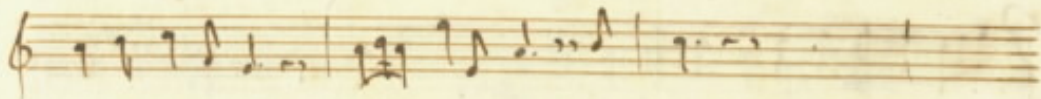
to basta basta momento ba staun momen to



Aurà fede oel zà quando fermer po=

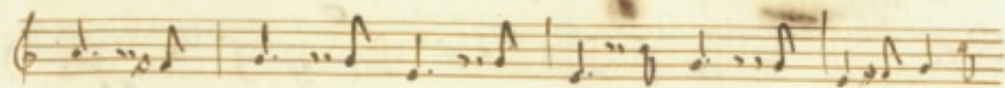
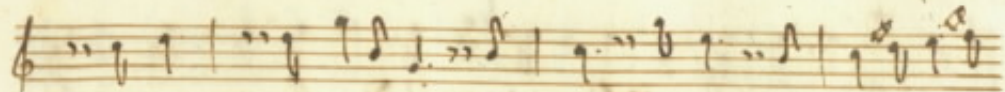


trà questo rapido fiume il molle argen = = to



il molle argen to Quando fermar potrà questo

865



Rapido fiume il molle argen- to il molle ar-



In capo

gen to

Deco.

Voce questa non fu ma stral di foco e strale in

notte estiva che lascia doue passa, e

Straggi e Morte così di mille Amori

chi disprezzò gli strali così di mille Veneri chieste =

ma i uessi ci bei rigori non uedendo l'oggetto al

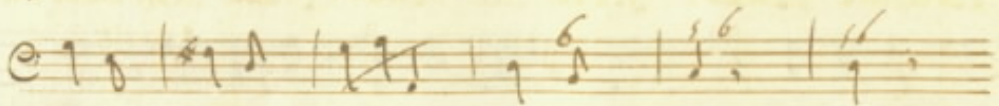
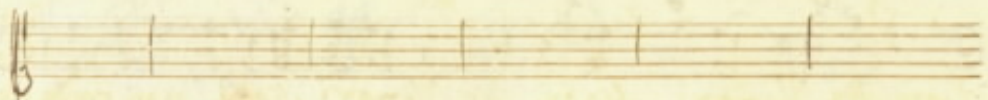
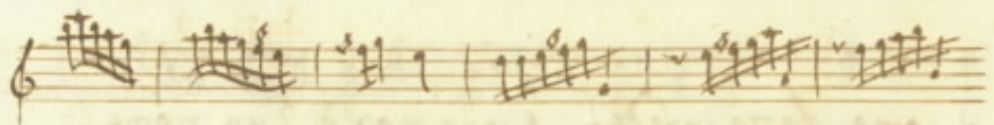
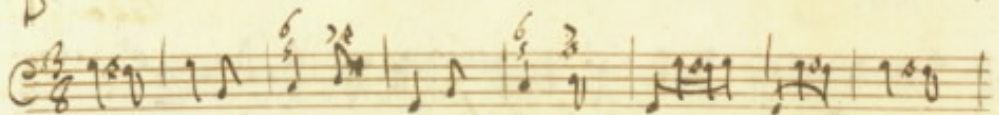
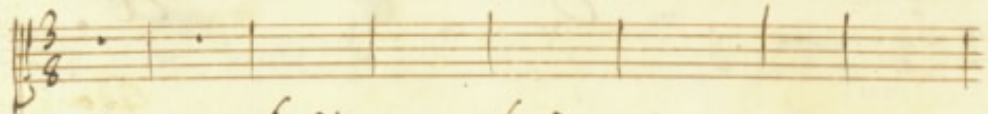
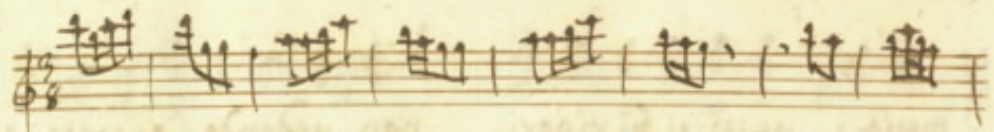
suono d'una uoce Amò l'aura percossa e non so

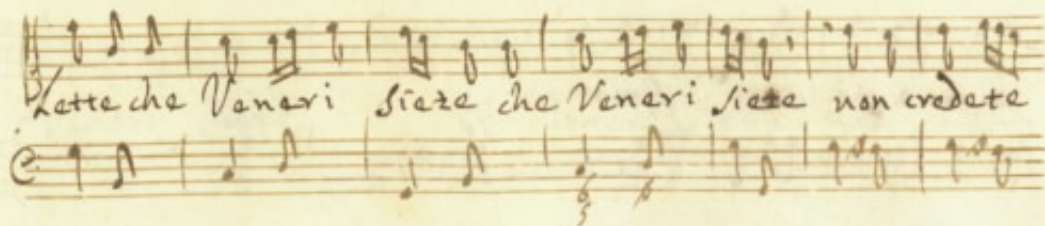
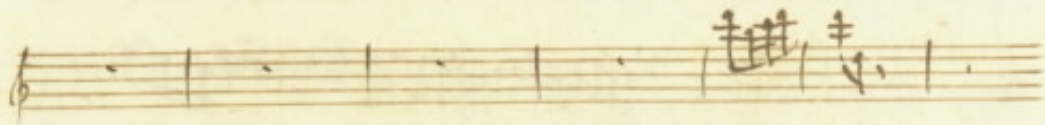
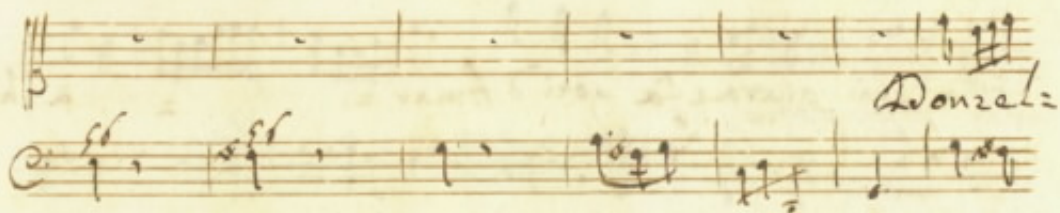
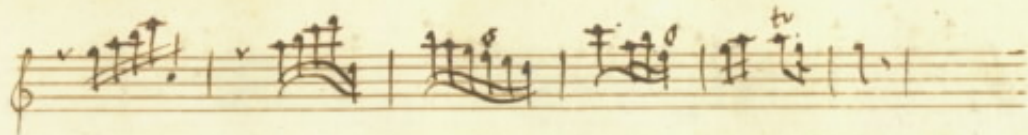
come fatto infedel s'innamorò di un nome

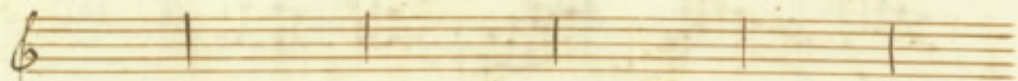
Segue

43





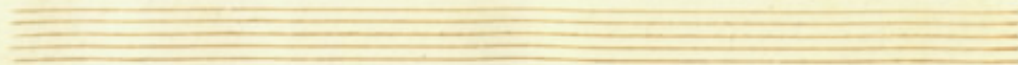


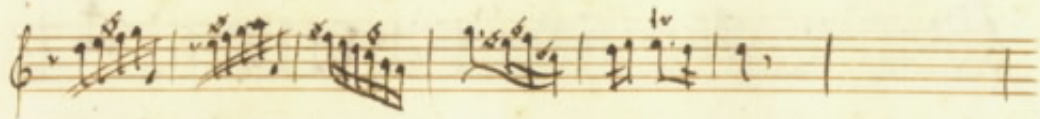


à chi giura e fa voti d'Amor = = à chi

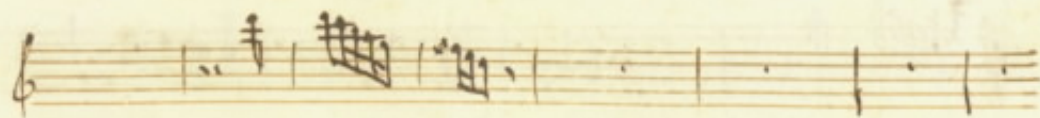
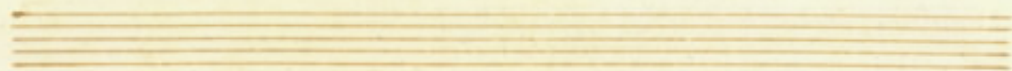


giura e fa voti d'Amor



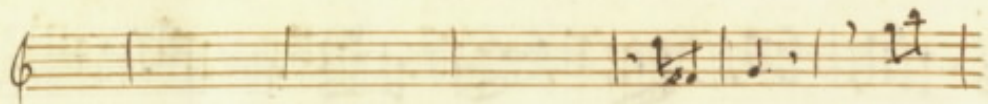


Donzella che

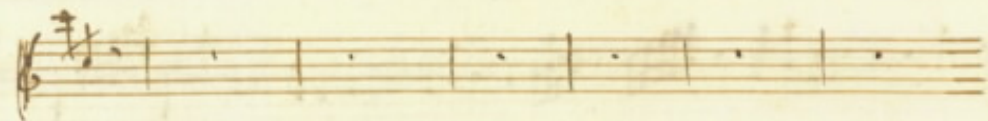
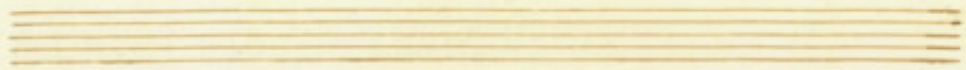


Veneri siete che Veneri siete non credete a



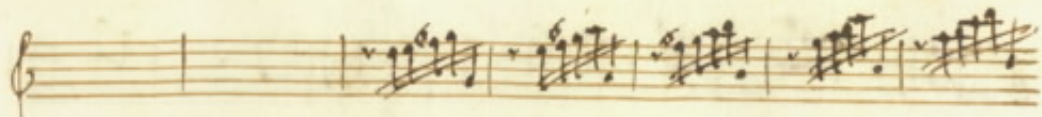


chi giurac fà uoti d'Amor nò nò nò non credete



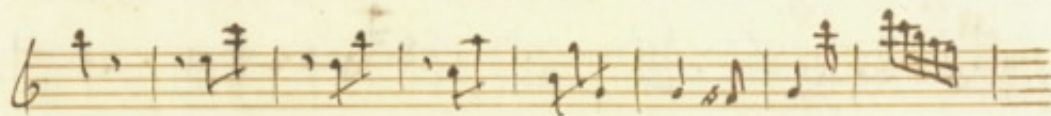
à chi giurac fà uoti d'Amor = = nò nò nò à chi





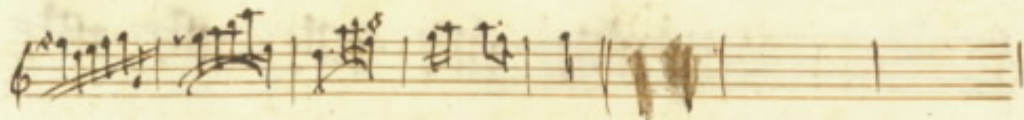
giurac fa uoti d'Amor nò non credete à chi giura

56 56 56



e fa uo- ti fa uoti d'Amor



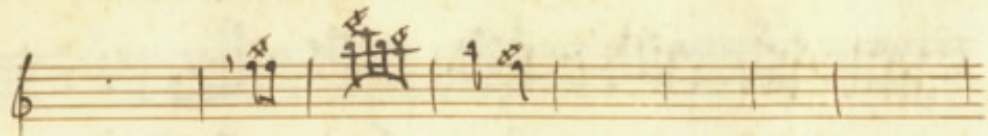


Quando giura un Amante ve =



Vaca Mâ è farfalla che presto è mendace d'ogni fiamma se





Vaugole l'ardor d'ogni fiam=

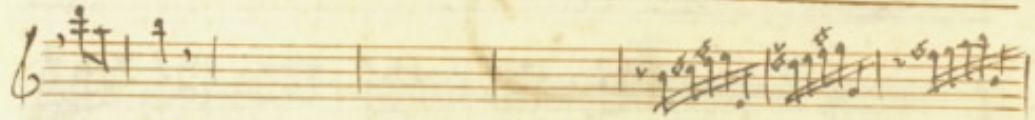


ma se uole l'ardor





Quando giuravi Amatec uera ce Ma è farfalla che pratto è menz



Dace dogri fiam



